

F4000 Advance Series

4 Axis Robot

Fisnar F4000 Advance series 4-axis benchtop robots are designed to ensure precise fluid placement and positioning.

Specifically made for fluid dispensing processes, the F4000 proprietary robot software is user friendly and enables the creation of complex dispensing routines (dots, lines, circles, arcs and fills) that can be set up and operational in just minutes using the teach pendant (included).

The additional 4th rotational (R) axis allows for dispensing at a user-specified, fixed angle around the 360° rotational plane, allowing it to access hard-to-reach areas and vertical surfaces.

The F4000 Advance can be supplied individually or as a complete stand alone machine system by integrating into a safety enclosure.**



Features:

- Integral tip position adjustment routine
- USB port for data transfer and back-up
- Program selector switch and fluid purge button
- True 3D interpolation and simultaneous motion control
- Modular connectivity design for the simple installation of productivity enhancement tools.

Benefits:

- High positional accuracy improves dispense results
- Proprietary user-friendly robot software allows programs to be easily and quickly set up using the teach pendant.
- Increased productivity due to faster cycle times and less rejects.

Specifications:

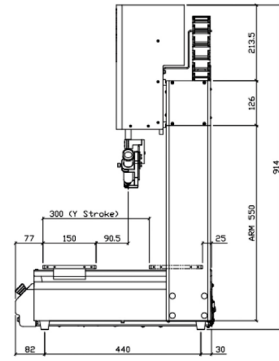
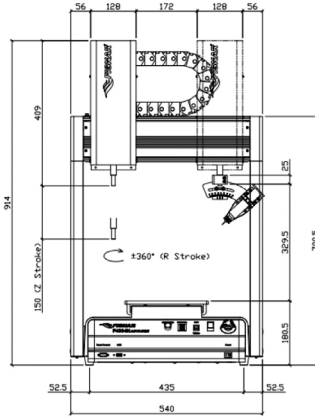
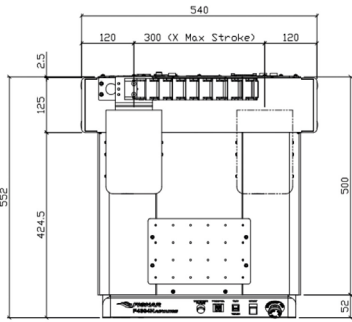
	F4304	F4404	F4504	F4604
Max Working Area (X / Y / Z)	300 / 300 / 150 mm (12 / 12 / 6")	400 / 400 / 150 mm (16 / 16 / 6")	500 / 500 / 150 mm (20 / 20 / 6")	600 / 500 / 150 mm (24 / 20 / 6")
Max Working Area (R)	+/- 360°			
Worktable Load	10kg (22lb)			
Tool Load	5kg (11lb)			
Max Speed (X & Y/Z)	800 / 320 mm/sec (31 / 13" / sec)			
Max Speed (R)	720 deg / sec			
Repeatability	+/- 0.008 mm*			
Data Memory	1-99 Programs. 1-50,000 points per program			
Drive System	3-phase micro-stepping motor			
Motion Control	PTP & CP			
I/O Signals	8 inputs, 8 outputs			
External Interface	USB & RS232			
Power Supply	Auto-switching AC100-240V, 320W			
Dimensions (W x H x D)	540 x 914 x 552 mm (21 x 36 x 22")	640 x 914 x 652 mm (25 x 36 x 30")	740 x 914 x 752 mm (29 x 36 x 30")	860 x 914 x 752 mm (32 x 36 x 30")
Weight	41kg (90 lb)	46 kg (101 lb)	48kg (106 lb)	52kg (115 lb)
Approvals	CE, RoHS, WEEE			

* Repeatability value will vary depending on measurement method ** Required to conform with European CE safety regulations (Machinery Directive 2006/42/EC)

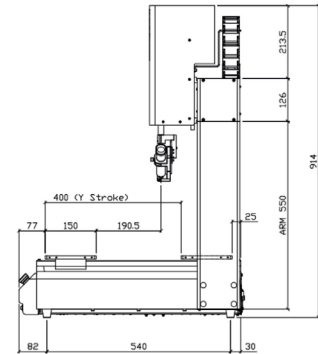
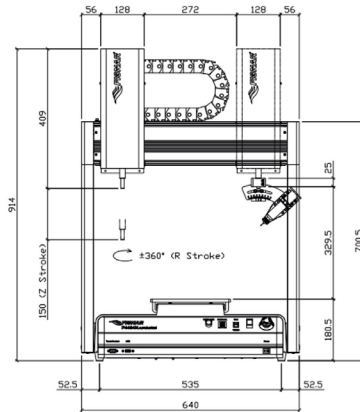
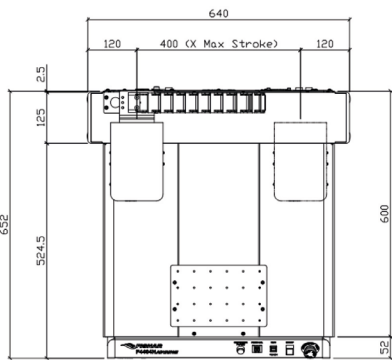
FREE Process Evaluation Video

Not sure how our equipment will perform with your product? The simplest way to see what Fisnar robots can do for your application is with a free video trial of the dispense process. You'll get a first-hand look at the process to ensure everything works to your expectations.

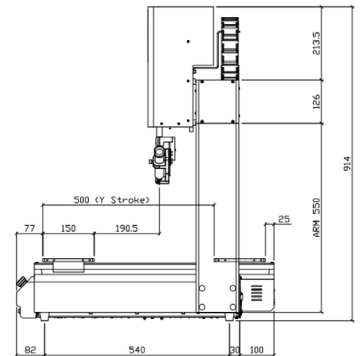
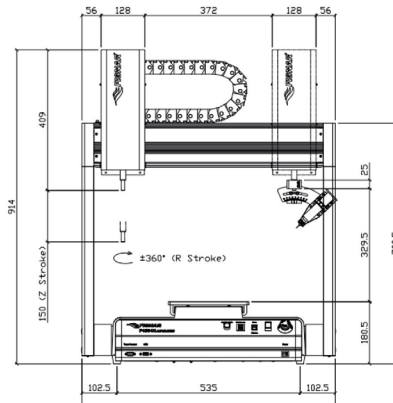
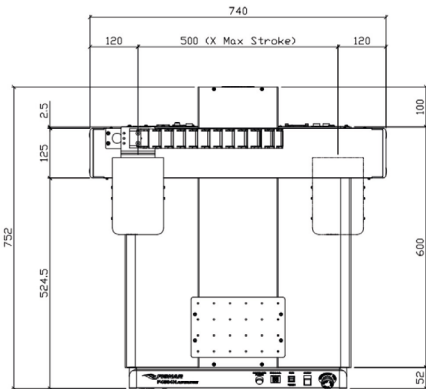
F4304



F4404



F4504



F4604

